

# Decline in health for an orca held in Russian 'whale jail'



© Tatiana Ivkovic

20190118

**ONLY 42 days later =**



20190301 (extensive bruising visible on lower jaws)



ABOVE: (close up)  
– note red colour from bruising and/or erythema (increased blood flow due to trauma, infection or inflammation). 20190301

Location of 'whale jail': Zaliv Vostock, Nakhodka - Srednyaya Bay (Russian Federation).

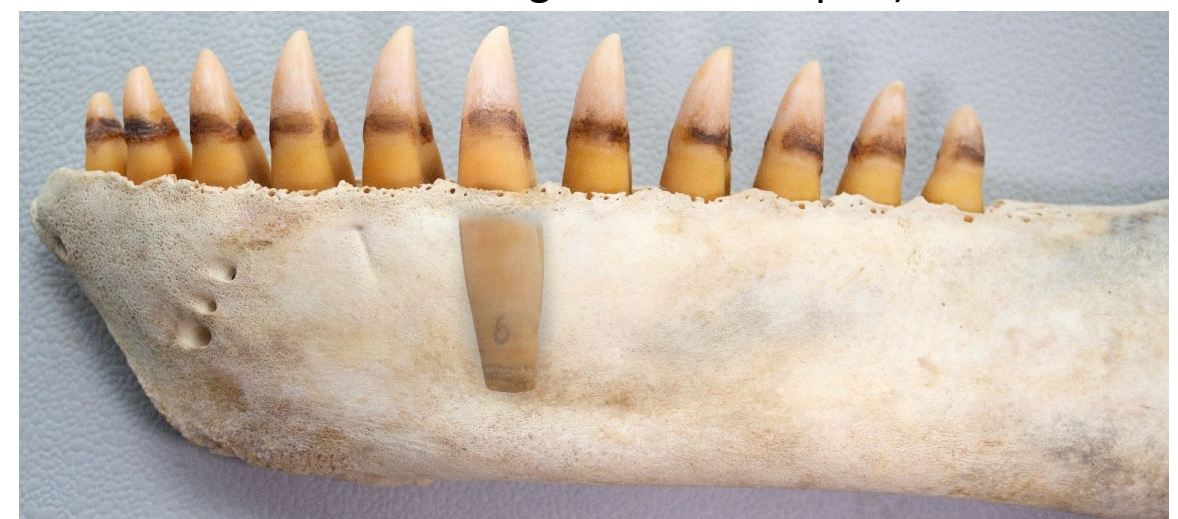




LEFT: Tooth (LR7) is broken (close-up) – the pulp is exposed – which will likely be a source of extreme pain – as the pulp of a tooth is full of nerve-rich soft tissue and the tooth is connected to a large nerve network in the mandible (lower jaw).

The extensive & alarming bruising and/or erythema (increased blood flow due to trauma, infection or inflammation) is also evident.

BELOW: The left jaw of an orca with tooth LL6 'exposed' (using photoshop), to show how the tooth is deeply imbedded into the jaw (the dark lines on the teeth are where the gums extend up to).

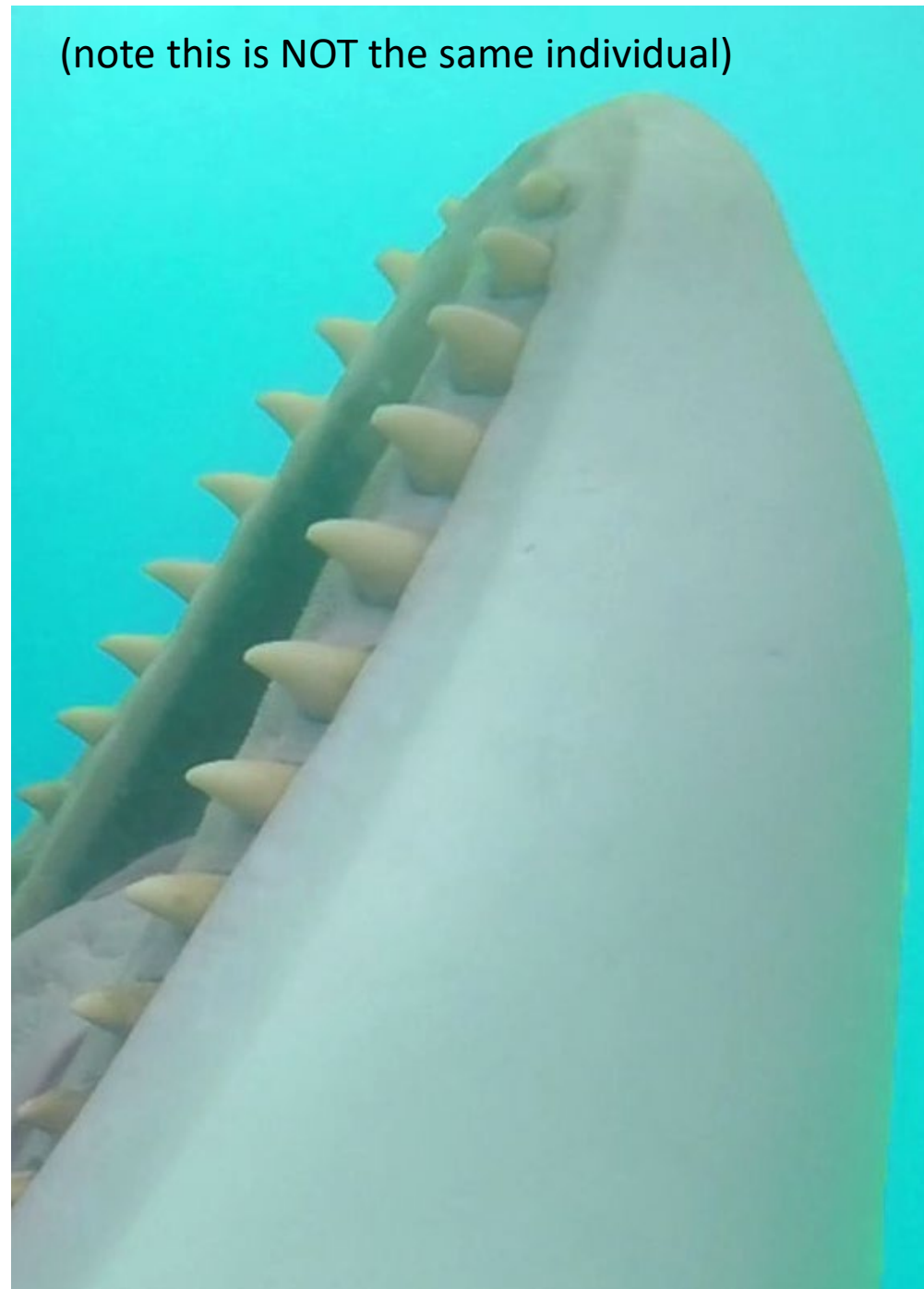




LEFT:  
Close-up of  
the  
bruising  
and/or  
erythema  
and sunken  
gums.

RIGHT:  
Comparison to a  
healthy orca's jaw  
– with  
unblemished  
white skin and  
pink full gums

(note this is NOT the same individual)







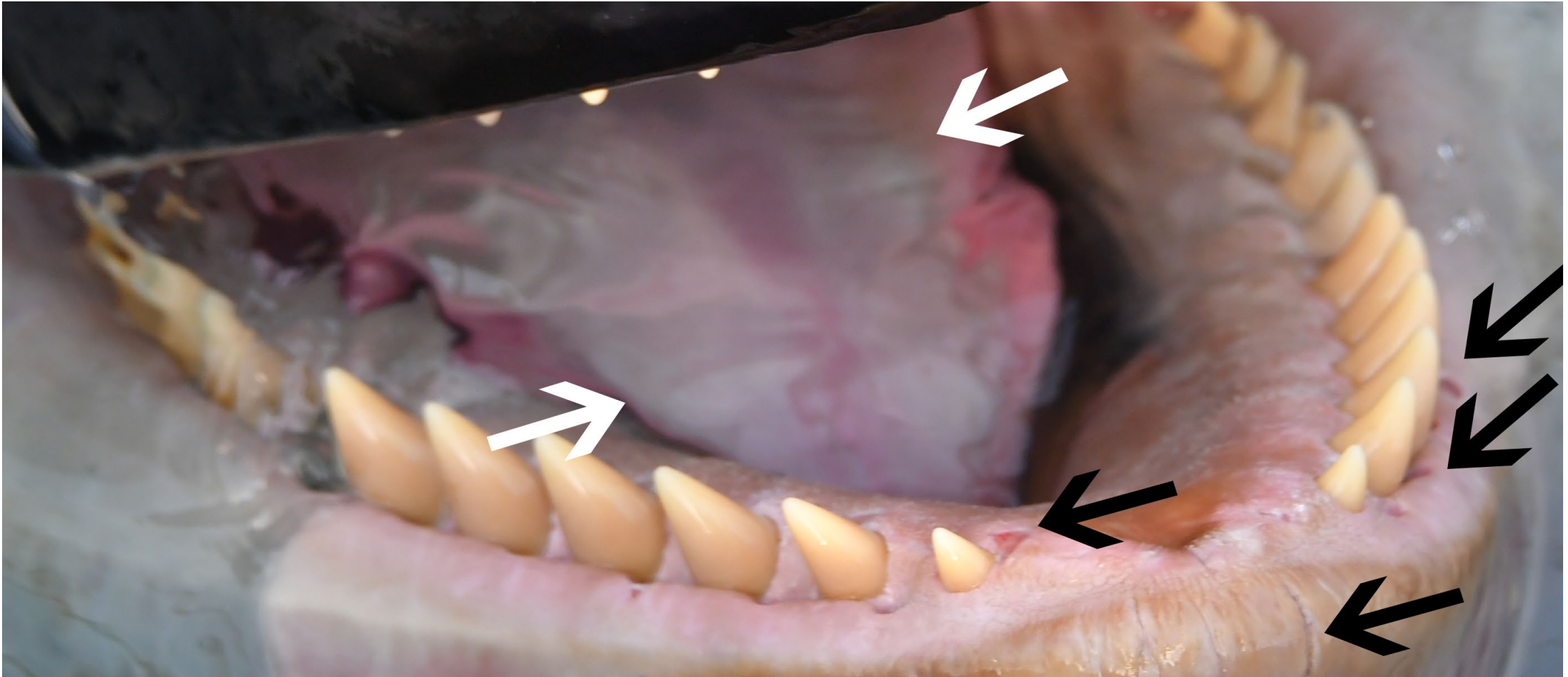
The bruising and/or erythema extends down into the lower chin



The issues extend to the chin and left jaw and include raised skin, indicative of other issues for this individual.



Note the patches of creamy colouring on the tongue. This is likely to be Candidiasis – an infection known to kill captive orca – and linked to poor housing conditions and stress.

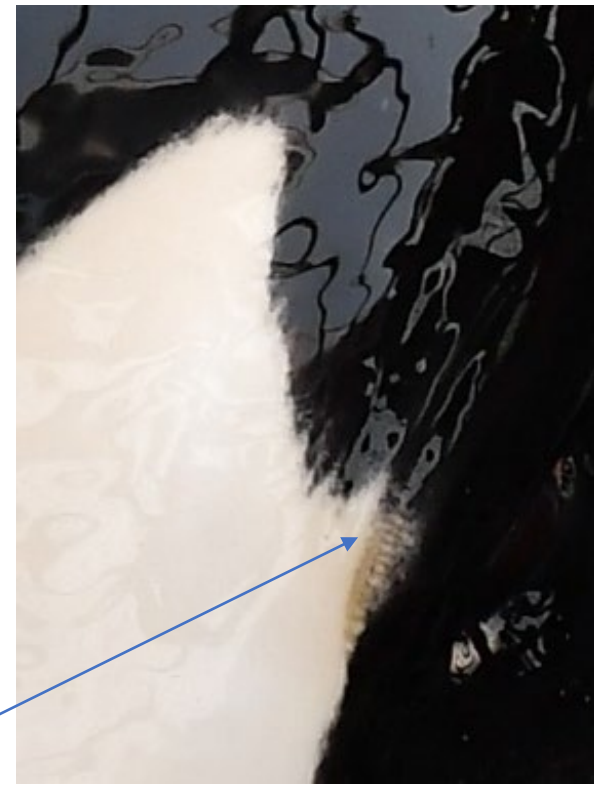


Damage to the skin can be seen near the teeth and on the symphysis (joining point of the mandibles) (black arrows)





Marks such as these allow matching between photos of the same sequence



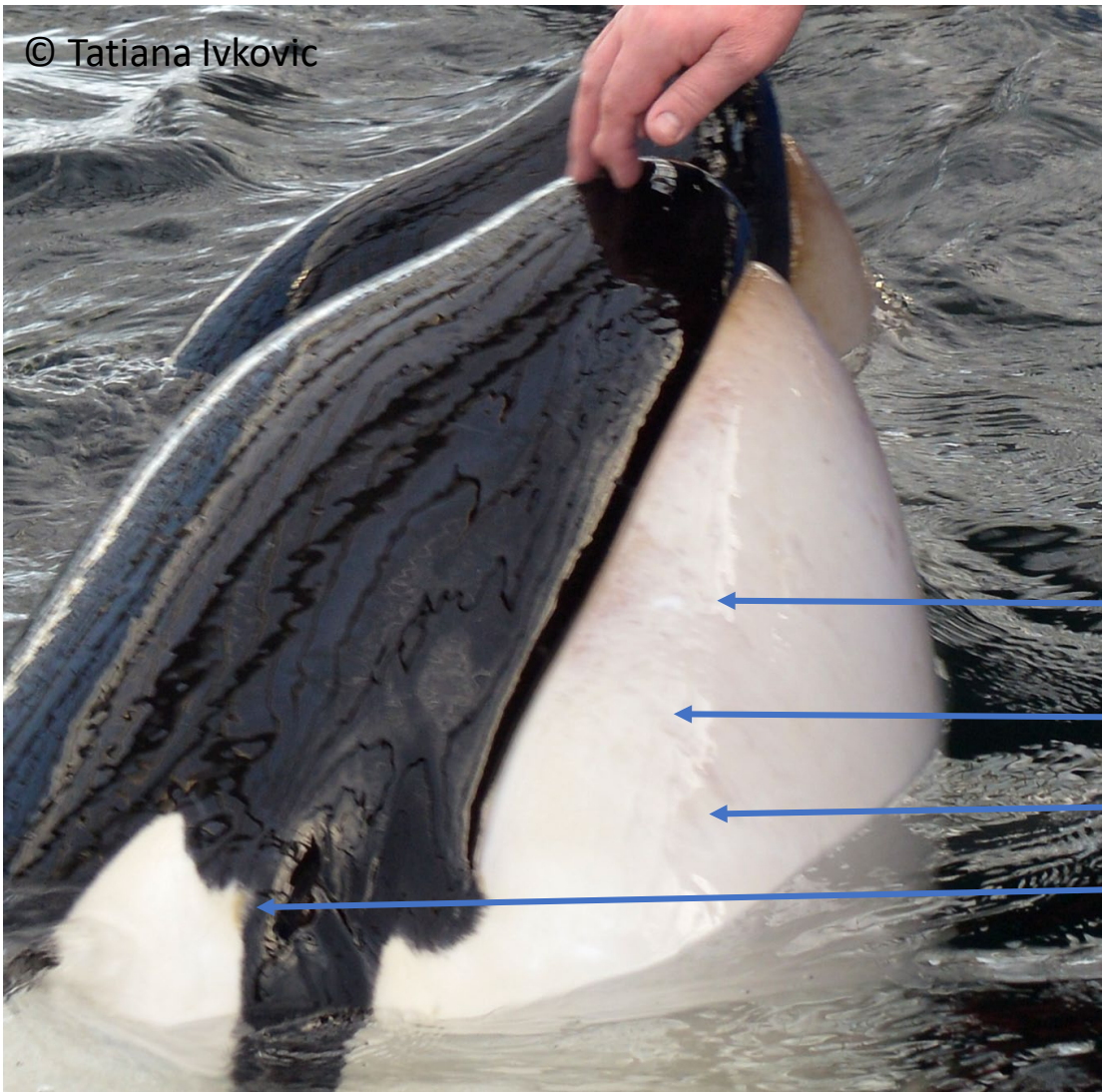
Close-up of 'dark' zone

The white the eye patch of all orca is unique like a finger print – no two are the same. This one has a U shape to the leading edge as well as small 'dark' zone.

20190301



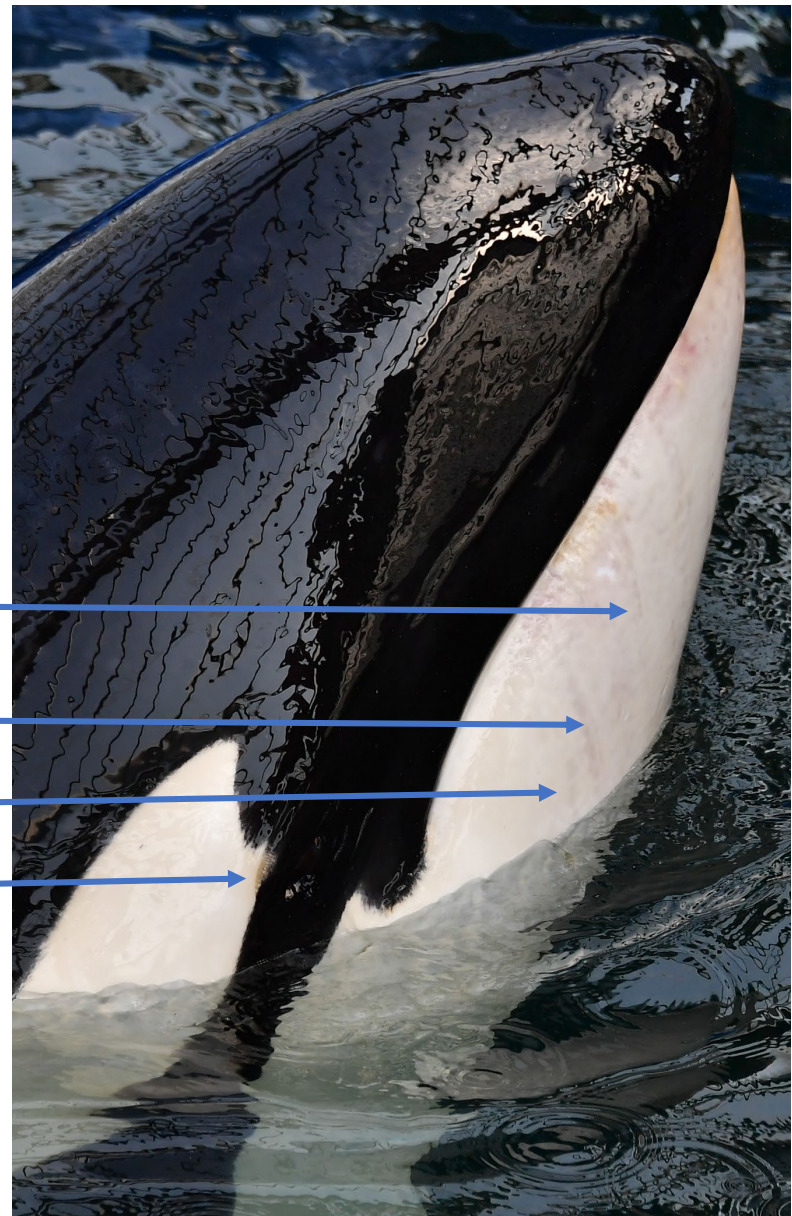
© Tatiana Ivkovic



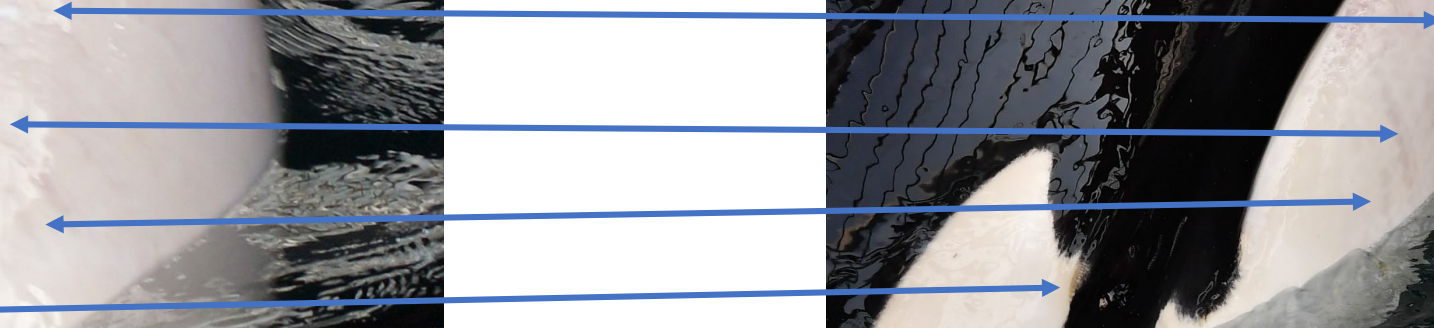
20190118

Eyepatch matches between dates (note U shape is photographed on different angles so appears slightly different, but key points can still be identified).

Marks match between dates



20190301





© Tatiana Ivkovic



20190118



20190301

The pigmentation at the corner of the animals mouth (called the gape) matches (note the fine 'feathering' and overall shape). The photo on the right shows new scars (red arrow)